



XBOX 360

XBOX
LIVE

THRILLVILLE

OFF THE RAILS



FRONTIER



LUCASARTS

⚠ WARNING

Before playing this game, read the Xbox 360 Instruction Manual and any peripheral manuals for important safety and health information. Keep all manuals for future reference. For replacement manuals, see www.xbox.com/support or call Xbox Customer Support (see inside of back cover).

Important Health Warning About Playing Video Games

Photosensitive Seizures

A very small percentage of people may experience a seizure when exposed to certain visual images, including flashing lights or patterns that may appear in video games. Even people who have no history of seizures or epilepsy may have an undiagnosed condition that can cause these "photosensitive epileptic seizures" while watching video games.

These seizures may have a variety of symptoms, including lightheadedness, altered vision, eye or face twitching, jerking or shaking of arms or legs, disorientation, confusion, or momentary loss of awareness. Seizures may also cause loss of consciousness or convulsions that can lead to injury from falling down or striking nearby objects.

Immediately stop playing and consult a doctor if you experience any of these symptoms. Parents should watch for or ask their children about the above symptoms—children and teenagers are more likely than adults to experience these seizures. The risk of photosensitive epileptic seizures may be reduced by taking the following precautions:

- Sit farther from the television screen.
- Use a smaller television screen.
- Play in a well-lit room.
- Do not play when you are drowsy or fatigued.

If you or any of your relatives have a history of seizures or epilepsy, consult a doctor before playing

Microsoft, Xbox, Xbox 360, Xbox LIVE, the Xbox logos, and the Xbox Live logo are either registered trademarks or trademarks of Microsoft Corporation in the U.S. and/or in other countries

THRILLVILLE *OFF THE RAILS*

Table of Contents

Xbox LIVE®	2
Game Controls	3
Back to the Park!	4
Main Menu	4
Pause Menu	5
New to the Park	6
Starting a New Game	6
Loading a Game	6
Saving the Game	6
Game Screen	6
Tutorials	7
The Attractions	7
Guests	7
Park Menu	9
Missions	9
Park	10
MyCrowd	11
Build	11
MyRides	13
Map	14
Coaster Builder	14
Party Play	14
The Games	15
Arcade	15
Attractions	16
Staff Games	17
Sideshows	18
Developer Credits	19
Contacting LucasArts	22
Limited Warranty	23



Play anyone and everyone, anytime, anywhere on Xbox LIVE®. Build your profile (your gamer card). Chat with your friends. Download content at Xbox LIVE Marketplace. Send and receive voice and video messages. Get connected and join the revolution.

CONNECTING

Before you can use Xbox LIVE, connect your Xbox 360™ console to a high-speed Internet connection and sign up to become an Xbox LIVE member. For more information about connecting, and to determine whether Xbox LIVE is available in your region, go to www.xbox.com/live.

FAMILY SETTINGS

These easy and flexible tools enable parents and caregivers to decide which games young game players can access based on the content rating. For more information, go to www.xbox.com/familysettings.

LANGUAGES THAT AREN'T SUPPORTED IN THE XBOX 360 DASHBOARD

If your game is available in a language that isn't supported in the Xbox 360 Dashboard, you must select a corresponding locale (region) in Console Settings to enable that language in the game. For more information, go to www.xbox.com.



Xbox 360™ Controller

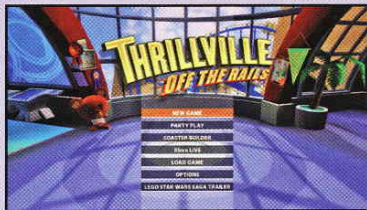


Left stick / D-pad ↑ / ↓ / ← / →	Move Character / Highlight Menu Item
Left stick / D-pad ↶ / ↷	Adjust Menu Item
Right stick	Camera Control
A	Context-Specific Action / Confirm Selection
B	Sprint / Previous Screen
BACK / X	Open Park Menu
RB	Look Camera
START	Pause Game / Open Pause Menu

You've got what it takes to create the greatest theme parks in the world! Whether you're building crazy coasters, talking to guests, riding the rides, or playing games, your job is to keep people happy — and keep Globo-Joy's saboteurs at bay! The options are endless! So what are you waiting for? Let's make some thrills!

Main Menu

Press **A** at the Title Screen to be taken to the Main Menu. You'll see six options: New Game, Party Play, Coaster Builder, Xbox LIVE, Load Game, and Options. Use the left stick or D-pad to highlight a selection and press **A** to confirm your choice. Press **B** to return to the Main Menu or go up one level in the menu.



Game Modes

NEW GAME

Begin a new game and help Uncle Mortimer create the greatest theme park in the world.

PARTY PLAY

Have a blast playing a number of 1-4 player mini-games.

COASTER BUILDER

Build and design thrilling new coasters! For more information, see Coaster Builder, pg. 14.

XBOX LIVE

Unlock Achievements, share your coasters, and check the Leaderboards for the games you can play in your park and see how well you stack up against your friends!

LOAD GAME

Load previously saved data and continue your progress.

OPTIONS

Access and adjust various game options.

- **SFX Volume:** Adjust the volume of the in-game sound effects.
- **Music Volume:** Adjust the volume of the in-game music.
- **Speech Volume:** Adjust the volume of speech.
- **Controller Vibration:** Toggle controller vibration ON/OFF.
- **Camera Invert:** Toggle camera inversion ON/OFF.
- **Movie Subtitles:** Toggle movie subtitles ON/OFF.
- **Tutorials:** Toggle tutorials during new games ON/OFF.
- **Menu Color Scheme:** Change the menu colors to one of ten color schemes.
- **View Cutscene:** Watch previously unlocked cutscenes here.

Press **START** while roaming in your theme park to pause the game and open the Pause Menu. Use the left stick or D-pad to highlight an option, and press **A** to confirm your choice. Press **B** to resume your game or go up one level in the menu.



OPTIONS

Adjust the various game options. The available options are identical to those of the Main Menu. For more information, see Options, pg. 4.

XBOX LIVE

Unlock Achievements, share your coasters, and check the Leaderboards for the games you can play in your park and see how well you stack up against your friends!

TUTORIALS

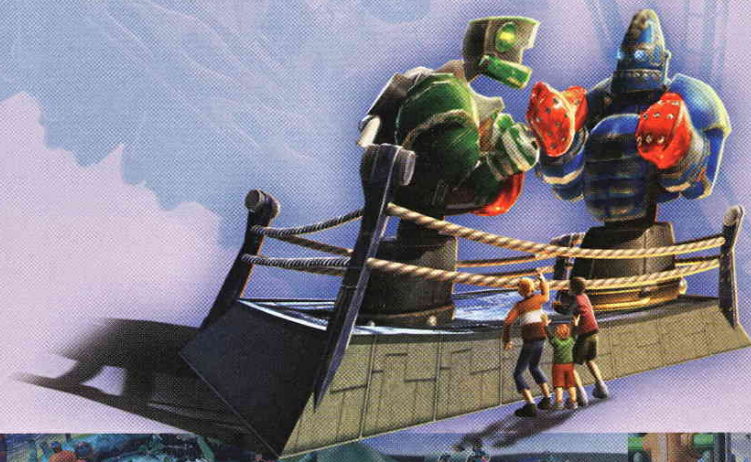
Select from a variety of comprehensive tutorials to help you learn more about managing your park.

SAVE

Save your game so that you can continue from this point when you return.

EXIT TO HQ

Leave the park and go to the HQ. Here, you can customize your character, switch parks, save your game, adjust the game options, and view any trophies and prizes you've earned or achieved.



Starting a New Game

Select **NEW GAME** from the Main Menu to watch the intro movie with Uncle Mortimer. At the Choose Character screen, use the left stick or D-pad to rotate the character wheel through your available choices. When you find a character you like, press the left stick or D-pad \downarrow to highlight **ACCEPT** and press **A** to confirm your choice.

If you want, you can customize your character by highlighting **APPEARANCE**, **CLOTHING**, or **EDIT NAME** and pressing **A**. Customizing gives you the freedom to configure your character's appearance with various head, hair, clothing, and color options. Select an option and press the left stick or D-pad \uparrow and \downarrow to choose the part you want to customize, then press the left stick or D-pad \leftarrow and \rightarrow to change the appearance of that part. You can also edit your character's name by highlighting **EDIT NAME** and pressing **A**. When you're ready to go, highlight **START GAME** and press **A** to head to the park! Ready to get started?

Loading a Game

Selecting **LOAD GAME** from the Main Menu will allow you to choose previously played game data and continue from where you left off. If you have unlocked more than one park, you can select which one you want to start from.

Saving the Game

In order to save your game, exit any mini-game you may be involved in and then press **START** to enter the Pause Menu. Select **SAVE** and press **A** to confirm your choice.

Game Screen

The Game Screen has a few functions that change according to the context of the action on the screen.

1. Status Window: The status window shows the amount of money you have, current progress toward your next park, and the amount of missions you've completed. The progress bar turns green as it fills up.

2. Action Button: This small circle in the lower right-hand corner of the screen changes according to what's available for you to do.

- The **HAND** icon appears around attractions like Coasters, Rides, and Games. It will give you options to ride, play, manage, paint, and do many other things with your attractions.
- When the icon is an **ID CARD**, you are speaking with a member of your staff. You can take control of a staff member and perform their duties.
- If the icon is a **CHAT BUBBLE**, you can speak to a park guest.
- A **BRICKS** icon means that you can build in this area.

3. Information Box: The information box tells you when you have unlocked new missions and designs, earned money, and other important information about your park.



Tutorials

Once you begin your first game, you'll be dropped into your park and ready for action. In front of you will be five tutorial icons, representing **Business**, **Guests**, **Build**, **Games**, and **Upkeep**. Approach the tutorial of your choice and select it. You'll be given a thorough tour of the first mission for each icon, which will set you on the path to creating the greatest theme park ever. Completing all five of these will tell you everything you need to know! Each tutorial is color-coded to match the different types of missions on your Missions Screen.

Note: Tutorials can be toggled ON/OFF via the Options Menu on the Pause Menu.

The Attractions

RIDING

You're the park manager, so you know what that means — you get to ride for free! Walk up to any ride in the park and select it. Select **RIDE** to climb aboard.



BUILDING

One of your most important jobs is to build the rides and stalls in the park that meet the park guests' needs — and make you the most money!

PLAYING

You can also play every game that you build in Thrillville by walking up to it and pressing **A** when the **HAND** icon appears.

Guests

BASICS

Guests are vital to the health of any park. They bring in friends and family and, most importantly, money! You'll learn all kinds of things from talking to your guests.



FRIENDS

You can enter into a conversation with your guests by walking up to them and pressing **A**. If the guest is part of a group, a list will pop up with each member of the group, allowing you to talk to a specific one. When you speak to a guest, a Friendship Meter will appear at the bottom of the screen. Depending on your choice of conversation topics, that meter will go up or down.

CHATTING

Use the Chat Menu at the top to select things to say. When a guest likes the subject you've chosen, the Friendship Meter will rise. Subjects they dislike will lower it. You can also ask your guests for advice on how to make your parks better.

A TOUCH OF CLASS

Everything about your park affects your guests' opinions and enjoyment. If the park is dirty and the rides are in poor shape, the guests are not going to be happy. If there are no food or drink stalls, bathrooms, or other essentials, the guests will leave, quick-like! When you're talking to a guest, the Needs window shows you their likes, dislikes, and top needs. It will give you great clues about what you'll need to do to make them happier. Access it by highlighting NEEDS on the bottom of the Chat Menu and then pressing **A**.

FLIRTING (TEENS ONLY)

Smooth (park) operators can flirt with a member of the opposite sex. If you're doing well, you'll see an Attraction Meter pop up above the Friendship Meter. Keep wooing the person until you've earned Love Interest or Sweetheart status.

When you make it to Love Interest, you'll unlock the Flirt mini-game among your menu choices! Select FLIRT MINI-GAME, and follow the instructions on screen to match Cupid's arrow and your love interest's favorite topics.

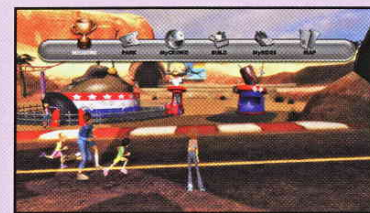
Note: In certain cases, you can take control of a guest and help him or her get with the language of love. Keep an eye out for the MATCHMAKE option when speaking to guests!

CHALLENGE

You can also challenge any park guest to a game during a conversation. If they accept, the Challenge Menu will give you a choice of mini-games to choose from. After the game, you'll be transported back to your previous location in the park.



The Park Menu is where you do most of your theme park management. You can access the Park Menu while in your theme park by pressing **X**. The Park Menu has six submenus: **Missions**, **Park**, **MyCrowd**, **Build**, **MyRides**, and **Map**. With the Park Menu activated, press the left stick or D-pad to highlight an option. Press **A** to confirm your choice.



Missions

BASICS

Looking for the quickest way to solve your park problems? Missions give you specific goals to help make Thrillville better! Select the MISSIONS submenu from the Park Menu. You have five classes of missions, each of which relate directly to the functioning and popularity of the park. **Build**, **Games**, **Guests**, **Upkeep**, and **Manage**. As you complete these missions in each category, you'll unlock new ones. Completing missions earns lots of great rewards!



Some missions, when selected from the Park Menu, will transport you directly to where you need to be in order to complete it. Other missions may just give you hints on how you could complete them.

Note: Sometimes, you will come across a character with an icon that looks like a trophy above their head. They are involved in a mission, so be sure to speak to them.

THRILLS

Every single thing you do in your park — building rides, playing games, and especially completing missions — will increase your park's Thrills. Collecting Thrills increases your park owner level. For every two promotions you receive, you'll earn the privilege of opening up a new park of your choice!

TROPHIES

Trophies are awarded upon successful completion of a mission. Some missions only hand out Bronze, Silver, or Gold trophies according to your performance. These represent how high you scored or how successful you were in completing a mission. Other missions just have a Gold medal. This signifies that you completed the mission.

NEW PARKS

Every time you earn the right to open a new park, the game will take you to a screen that shows you which new parks are available to you. Once you've chosen which park to unlock, you can travel to it any time, either from the Thrill HQ or via the "Throob" — stations that you can find inside every tunnel in every park. If you see a Throob station, walk up to it and press **A** to switch to a different unlocked park.

Park BASICS

Select the Park submenu from the Park Menu. Here is where you can find out all kinds of information on your park and your attractions. You can view your staff, train them, take out a loan, track your player stats, and more.

OVERVIEW

This is the screen that shows you a lot of vital facts for your park. The average guest stats, such as **Thirst**, **Hunger**, **Bladder**, and **Happiness**, are displayed as well. If the Hunger or Thirst Meters are in the red, build some food-and-drink stalls to improve the situation. If nausea is an issue, cut back on the wild rides and build more restrooms. Are your guests bored? Time for new rides!

You can also view your current amount of cash here, as well as the date, number of stalls, attractions, and total visitors you have. Use this screen to stay on top of your park's performance. If visitors are down for the month, try and do something to get their attention. Examine all these stats and you'll be well on your way to having the theme park of you and your guests' dreams!

PARK UPGRADES

Park Upgrades allow you to research new and exciting features for your park. You can view upcoming research items or adjust spending to try and unlock rides faster. Marketing advertises your park in a periodical, getting big publicity and drawing people to the park. You can use marketing to attract your favorite groups too. If teens aren't interested in coming to the park, advertise in a teen magazine until they come in droves. Loans give you extra money for running the park — though you will have to pay it back, with interest.

STAFF

Hiring and training staff is vital to the well-being of your park. A well-trained staff maintains the park on their own, though you can take control of any of them at any point and do their job for them. Make sure that you hire enough people to take proper care of your park, and train them well. Well-trained staff will slowly train other staff members as time goes on. But if you want to cut down on costs, you can also fire any staff member at any time. It's tough luck, but that's business!

There are three kinds of staff — **Entertainers**, **Mechanics**, or **Groundskeepers**. Entertainers do their best to keep guests happy, Mechanics fix rides, and Groundskeepers clean up the garbage. You can train them whenever you want, bumping up their skills and taking care of the park yourself in the meantime.

Note: You earn points while training any of your staff, and a high score means a better-trained staff! Keep your staff trained and only good things will come your way. For more descriptions on how staff mini-games work, see page 15.



PARK INFORMATION

The demographic data under the Park Information Menu is useful if you are fine-tuning your park's performance. See what demographics spend money on your park and even how much money they enter the park with.

You can also check your profits and other finances under this menu. You can see what kinds of rides are earning you money and what doesn't turn a profit at all.

THRILLVILLE STATS

You can view your total stats for the game here. If you're very fond of riding roller coasters, you can see the distance you've traveled while riding them. While you're at it, you can also check out the most popular, tallest, and longest rides. Are you curious to see how much money you've made and what your parks are worth? Check here to find out!



MyCrowd BASICS

The MyCrowd Screen lets you keep track of all your friends and love interests. You can see exactly how they are feeling at the current point in time, in addition to what gifts you are able to give them. You can even view your own stats on this screen. If you need to, you can warp directly to their location if they're feeling down or are upset about something. Keeping your friends happy and addressing their needs is a surefire way to keep your park looking good.

Build BASICS

Building rides is an important part, if not the most important part, of managing your theme park. If you don't have any rides, you won't have any guests. No guests = No money. No money = No park. You can see how this would be a problem. You'll start out each park with enough seed money to build a few things and start bringing in income.

The BUILD portion of the Park Menu is the key to making money. You can look at the available attractions, which are sorted into **Carnival Rides**, **Coasters**, **Race Tracks**, **Games**, and **Stalls**. Once you decide what type of attraction you want to build in your park, you'll be given a list of the attractions you can build. Selecting one will take you to the Build Menu, where you can determine placement and orientation of the attraction. Once you've built it, you can spend time giving it your own personal touch by laying down a fresh coat of paint or tricking it out with the theme of your choice.

In every park, you will have access to some pre-built Coasters and Race Tracks. But you can also build these bad boys from scratch!



RULES OF ATTRACTION BUILDING

You can only have one of each ride in a park. If the Build Menu says that a ride is "Already Built," you must select another. When building a ride, it will be colored either blue or red. Red means that the ride won't quite fit where it is until you wiggle it around or move it to a different spot. Blue means that you are good to go and can place the ride.

BUILDING COASTERS

Roller coasters are the starring attractions of every great theme park. To make sure they get the attention they deserve, they get their own unique build stations, which you can find by looking for floating signs marked with the word "COASTER." When built, Coasters cannot intersect with other attractions and cannot get too close to the guests for safety reasons. If you keep these two rules in mind, you can make the craziest Coasters in the world! There are two kinds of Coasters: **Pre-built** and **Custom**.

Pre-built: These Coasters are ready-made and can be built with the press of a button.

Custom: These Coasters are tailor-made by YOU. You decide each angle, turn, bend, and loop-de-loop, piece by piece. With Custom Coasters, you can tilt tracks or add WHOA coaster features like drops, flames, or TNT to them.

COASTER TIPS:

- If the track piece you're currently laying turns red, it can't be placed. Backtrack using **B** or alter the angle of the track until it turns blue, enabling it to be laid.
- Other attractions may get in the way of your Coaster's path. You can sell these attractions to make space. Don't worry — you can always rebuild them later in a new spot!
- You complete a Coaster by returning it to the starting gate. The track must be level with the starting gate as it comes in. If you're having trouble connecting the two, press the Track Assist button to let the computer pick out a solution for you.
- You can keep an eye on your Coaster's progress by viewing its statistics. Press **X** any time during construction to view the statistics window. Important information, such as the power limit / throttle levels, Thrill points, and nausea levels are displayed here.
- Coasters left unfinished will lead to a crash! Thankfully, Mortimer's special patented ejection seats will spring into action, parachuting your guests painlessly to the ground but potentially scaring other guests in the process.

Note: Race Tracks and Mini-Golf courses are not that different from Coasters, though they have fewer options. You cannot add loops, but the method of laying them out is essentially the same.



MyRides

BASICS

MyRides shows you all the attractions in your park, at a glance. If you need to know how much power a ride is pulling or how much it costs to run the ride, you can find that out here. You can even check to see how nauseous the ride makes your guests or how long it lasts!

Note: You can ride or play a specific attraction directly from the MyRides Menu. You can also repaint, manage, or trick out your attractions from this point.



CUSTOMIZING

Once you select an attraction from the MyRides Menu, you can then spend some time customizing it to your heart's content.

Paint: Slap a fresh coat on your ride to make it stand out! Select from a variety of vibrant colors with the paint selector, or choose the SPLATTER option to let the computer do it for you.

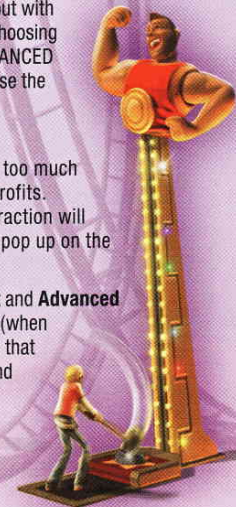


Trick Out: Create a theme for your ride or attraction and then trick it out with all the bells and whistles! Start by choosing a theme and then either choosing TRICK OUT to have the computer do the work for you or selecting ADVANCED to add your own personal touch. Highlight the PIECE option and then use the left stick or D-pad to place and add your piece.

EDITING

Every ride costs money and you get to decide how much. Charging too much will chase customers away. Charging too little will decrease your profits. Select a ride on the MyRides Screen and choose MANAGE. The attraction will appear in the background of the screen and the Manage Menu will pop up on the right side of the screen.

You can adjust the ticket price here or choose to sell the ride. The **Edit** and **Advanced Options** submenus offer even more options, such as editing the track (when available) or setting the number of trains and their speed. If you notice that you're losing customers, take a moment to try adjusting your prices and see if that draws them back in.



Map

You can use the map to easily locate and travel to any of your attractions. Use the left stick or D-pad to move to the nearest ride and display its details. Press **A** to travel to the highlighted ride and **B** to back out.



Coaster Builder

The Coaster Builder Menu serves as a kind of construction site where you can create new Coasters and racetracks in an open area that's free of obstructions. You can go wild and build any kind of track you like, from harrowing drops to thrilling loops! The world is yours and only the sky is the limit — literally!



Party Play

You know all those neat little games you can build in your parks? You can play all of them for free in Party Play mode! Select the game you wish to play. You'll be able to select the difficulty, type of game (Single, Battle, Team), and the level to play on. After that, up to four players can join the game.



Arcade

STUNT RIDER

Help Weevil Knievel rip through the wild landscapes of chasm farm to St. Rook's annual scarecrow's ball.

Controls:

Shift Weight / Steer

Accelerate

Brake / Reverse

Horn

Cycle through Songs

Left stick /
D-pad

A

X or **B**

Y

L1 and **L2**



BANDITO CHINCHILLA

Can you save Bandito's sister? And why is he called a chinchilla? Find out in this side-scrolling beat-'em-up!

Controls:

Move Bandito

Dash / Evade

Jump

Normal Attack / Pick Up Item

Strong Attack

Special Attack

Left stick /
D-pad

Left stick /
D-pad
(double tap)

A

X

Y

R2



TANK FRENZY

Drive your tank to victory in this top down shooter.

Controls:

Steer / Move Tank

Rotate Turret

Fire Machine Gun

Fire Cannon

Left stick /
D-pad

Right Stick or **Y**, **X**, **A** and **B**

L2

R2



Attractions

ROBO K.O.

Sit in a giant robot and pummel your adversary!

Controls:
Move

Block
Block Low
Left Hook
Right Hook
Cross
Uppercut
Jab

Left stick /
D-pad
LB (hold)
LB + Left stick / D-pad ↓
A
B
Y
RB
X



COASTERTRON

Ride your coaster in the virtual reality simulator. Can you hit all the zones and thrills?

Controls:
Lean into WHOA Zones

Touch WHOA Targets

Left stick /
D-pad
A



POOL

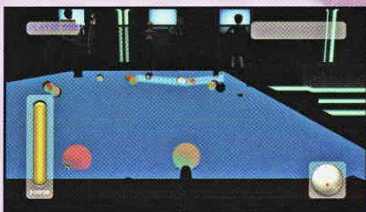
Play eight or nine ball, or try your hand at the speed pool mode.

Controls:
Aim Cue Stick

Adjust Power

Cue Position
Shoot
Pick Up / Place Ball
Top Down View
Fine Control

Left stick /
D-pad →, ←
Left stick /
D-pad ↑, ↓
Right stick
A
B
X
LB



Staff Games

ENTERTAINER

Strut your funky stuff and hit the beat to pump up the Thrillville crowds.

Controls:
Aim the Arrow
at the Incoming Notes

Left stick /
D-pad

Press corresponding on-screen button



GROUNDSCOOPER

A frenetic race against the clock to blowvac Thrillville clear of gunk!

Controls:
Move

Aim Blowvac
Suck Litter
Wash Vomit

Left stick /
D-pad
Right stick
RB
LB



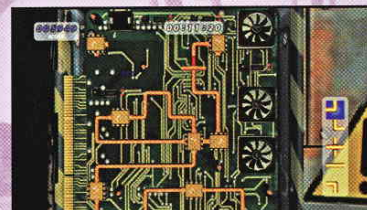
MECHANIC

Link up the circuit boards, beat the clock, and keep things running smoothly. Connect the circuits by placing components on the board. Make sure you use the right pieces to make a connection from one circuit to another!

Controls:
Move Cursor

Place Component
Remove Component

Left stick /
D-pad
A
Y

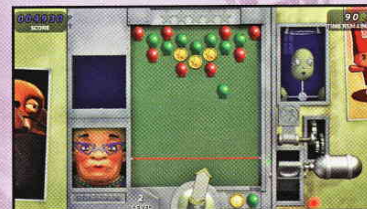


VENDOR TENDER

Keep the boss happy and combo your way to victory in this fast-paced puzzler. Link together three or more like-colored balls to change them into tokens. Shoot the tokens to make them disappear. Sounds easy? Think again!

Controls:
Aim
Fire

Left stick / D-pad
A



Sideshows

ALLEY BALL

A sideshow classic: Get the balls in the hole for the best score.

Controls:

Aim / Throw

Left stick /
D-pad (pull
back then
press forward)



TEST YOUR STRENGTH

Swing the hammer and show your strength!

Controls:

Build Power

Left stick /
D-pad
(rapidly
shake back
and forth)

A



Swing / Aim

Frontier Developments Ltd.

Executive Producer

David Braben

Senior Producer

Jonny Watts

Producer

Michael Brookes

Assistant Producer

Gary Richards

Lead Artist

John Laws

Lead Technical Artist

Simon Brewer

Lead Designer

Dan Gould

Lead Engine Programmer

David Scantlebury

Lead Programmer

Stefan Mars

Lead Tester

Colin Davis

Cutscene CGI and Sound Effects

Axis Animation

In Game Music and SFX

Alistair Lindsay

Licensed Original Music

Al Lindsay

Writer

Greg Orlando

Senior Artists

Dean Searle

Ed Bright

Marc Cox

Senior Designer

Steven Burgess

System Architect

Thomas Morley

Senior Engine Programmers

Alex Jakes

Jon Lewis

Jon Travers

Matthew Halpin

Patrick Byrne

Sergei Lewis

Tim Hughes

Tom Beckman

Tom Clapham

Senior Programmers

Andrew Scott

Ian Collinson

Ian Taylor

Matthew Simper

Oscar Cooper

Animation Team

Neil Hall

Felix Iley

Artists

Ben McGrath

Carolyn Bailey

Chih-Chieh Wu

Chris Symonds

Ciaran Begley

Colin Merrick

Daniel Cornibert

Gary Bickmore

Hayden Scott-Baron

Iva McCartney

John Kelly

Khalid Shafique

Lee Dalton

Martin Squires

Paul Dahl

Radoslaw Walachnia

Rob Shoebottom

Selina Dean

Stacey Allen

Tjaart Kruger

Game and Level Design

Andrew Thomas

Michael Michael

Stuart Fraser

Additional Entertainer

Lead Design and Ride SFX

Adrian Fife

GUI Designer

Ben Dowie

Engine Programmers

Adam Brunning

Dinesh Mahathavan

Leslie Long

Matthew Hunter

Neil Dingley

Peter Halpin

Phillip Dexter

Ruari O'Sullivan

Programmers

Andrew Fry

Andrew Gillett

Christopher Swetenham

Cristina Balescu

Hapreet Nanra

Ian Hawkins

James Chilcott

John Richard

Martin Williams

Michael Toouli

Peter Parkin

Simon Mayes

Steven Kitson

QA Testers

Adrian Fife

Andy Misson

Anthony Marsden

Carlo Fusiello

Craig Abraham

Craig Green

Darryl Bartlett

Hannah Gordon-Smith

Ian Gander

Mike Gent

Natalie Amos

Nichola Watson

Paul Ashwood

VO Recording

Maton Music (with thanks to Brian

Greene, Chris Mann, Martin T.

Sherman and Rik Elliott at the

Sound Company)

Managing Director

David Walsh

Frontier Representation

Jacqu Lyons of

Marjaq Micro

LucasArts, a division of Lucasfilm Entertainment Company Ltd.

Senior Producer

Shara Miller

Associate Producers

Dave Cerra

Cara Diehm

Assistant Producers

Christopher "Soup" Lee

Michael "EmDub" Ward

Localization Producer

Marianne Monaghan

International

Production Assistant

Gabriel Bootz

Technical Director

Jonathan Williams

External Executive Producer

Darren Atherton

VP of Product Development

Peter Hirschmann

Assistant to the VP of Product Development

Lynda Benoit

LucasArts Logo

Animation Team

Edward Bowman

Jeff Brown

Jeff Sampaoli

Paul Pierce

Audio Department

Senior Manager

Darragh O'Farrell

Music Supervisor

Jesse Harlin

Senior Voice Editor

Cindy Wong

Voice Editors

G.W. Childs

Harrison Deutsch

Voice Director

Will Beckman

PARK Radio Assembly

Dave Levison

Jared Emerson-Johnson

Additional Sound Design

Chris Clanin

Julian Kwansneski

Bill Storkson

Jared Emerson-Johnson

Additional Script Writing

Jesse Harlin

Jesse Harlin

Michael "EmDub" Ward

Audio Department Coordinator

Meg Crowell

Original Thrillville

Compositions

David Collins

Jesse Harlin

"Off The Rails" by

Monkeynaught

Written and Produced by Jesse

Harlin and David W. Collins

at the LucasArts Recording

Studio - San Francisco, CA

Lead Vocals - Jesse Harlin

Drums, Bass, Guitars,

Background Vocals -

David W. Collins

Guitar Solo - Ric Wilson

Engineered by Angie Yesson,

Jesse Harlin, and

David W. Collins

Mixed by David W. Collins

Mastered by John Cumberlert at

Plant Mastering - Sausalito, CA

"Go For A Ride" by Mozingo

Written and Produced by Jesse

Harlin and David W. Collins

at the LucasArts Recording

Studio - San Francisco, CA

Lead Vocals - Jesse Harlin

Drums, Bass, Guitars,

Background Vocals -

David W. Collins

Engineered by Angie Yesson,

Jesse Harlin, and

David W. Collins

Mixed by David W. Collins

Mastered by John Cumberlert at

Plant Mastering - Sausalito, CA

"Perfect Day" by Rapsallion

Written and Produced by Jesse

Harlin and David W. Collins

at the LucasArts Recording

Studio - San Francisco, CA

Lead Vocals, Drums, Bass,

Guitar, Keyboards -

David W. Collins

Background Vocals -

Jesse Harlin

Engineered by Angie Yesson,

Jesse Harlin, and

David W. Collins

Mixed by David W. Collins

Mastered by John Cumberlert at

Plant Mastering - Sausalito, CA

"My Gurlz" by Spark Victoria

Written and Produced by Jesse

Harlin and David W. Collins

at the LucasArts Recording

Studio - San Francisco, CA

Lead Vocals - Genevieve Goings

Background Vocals - Jesse

Harlin and David W. Collins

Drums - David W. Collins

Drum Programming, Keys

- Jesse Harlin

DJ Scratches - Ryan Harlin

Engineered by Angie Yesson,

Jesse Harlin, and

David W. Collins

Mixed by David W. Collins

Mastered by John Cumberlert at

Plant Mastering - Sausalito, CA

HOW TO CONTACT LUCASARTS

LucasArts has set up a variety of services to provide you with information regarding our programs, hints, gameplay assistance, and technical support.

WHERE TO FIND US ONLINE

You can visit the LucasArts Web site at www.lucasarts.com. From there you can access the Support area where you will have the option to receive online technical support through Yoda's Help Desk, browse technical documents, or leave a message for an online representative. The Support section of the LucasArts Web site also features community-based Technical Support Forums where you can find the latest game support information, discuss technical issues and obtain assistance from other users.

YODA'S HELP DESK

We are proud to feature Yoda's Help Desk, an interactive knowledge base, which is available in the Support section of the LucasArts Web site at <http://support.lucasarts.com>. Yoda's Help Desk offers solutions to technical issues based on information you provide. Visitors to Yoda's Help Desk will be able to receive technical support 24 hours a day, seven days a week. If Yoda's Help Desk is unable to provide you with a solution to your problem, you will be given the option to submit an e-mail message to an online representative.

TECHNICAL SUPPORT MAILING ADDRESS

LucasArts, a division of Lucasfilm Ltd.
P.O. Box 29908
San Francisco, CA 94129
Attn.: Product Support

LUCASARTS COMPANY STORE

You can also visit our secure online store at <http://store.lucasarts.com>. The Company Store offers a complete selection of LucasArts games, hint books, and logo gear.

SOFTWARE LICENSE AND LIMITED WARRANTY

PLEASE READ THIS LICENSE CAREFULLY BEFORE INSTALLING OR OTHERWISE USING THE SOFTWARE. BY INSTALLING OR OTHERWISE USING THE SOFTWARE, YOU ARE AGREEING TO BE BOUND BY THE TERMS OF THIS LICENSE. IF YOU DO NOT AGREE TO THE TERMS OF THIS LICENSE, DO NOT INSTALL OR USE THE SOFTWARE AND PROMPTLY RETURN THIS PACKAGE AND ITS CONTENTS TO THE PLACE OF PURCHASE FOR A REFUND OR EXCHANGE SUBJECT TO THE RETURN POLICY OF THE RETAILER.

The computer program, artwork, music, printed materials, on-line or electronic documentation, and other components included in this product and all copies of such materials as such as may be modified or updated (collectively referred to as the "Software"), are the copyrighted property of LucasArts, a division of Lucasfilm Entertainment Company Ltd. and/or its affiliated entities or divisions, and its licensors (collectively referred to as "LucasArts" or "Publisher"). The Software is non-exclusively licensed (not sold) to you, and LucasArts owns and/or controls all copyright, trade secret, patent and other proprietary rights in the Software. LucasArts may make improvements or updates to the Software at any time and with or without notice to you. Such improvements or updates may be automatically downloaded and incorporated into the Software where technologically feasible. Such updates or improvements may change the game play associated with the Software.

Subject to the terms and conditions of this Agreement, you may use the Software, solely for your personal use and only in connection with a Microsoft Xbox 360 video game system. You may not circumvent or attempt to circumvent any technological measures in the Software or the media designed to prevent copying or unauthorized access.

All rights not specifically granted under this Agreement are reserved by LucasArts and, as applicable, their licensors. You may not: (1) copy the Software in its entirety onto a hard drive or other storage device and you must run the Software from the included Digital Versatile Disc ("DVD"); (2) distribute, rent, lease or sublicense all or any portion of the Software; (3) modify or prepare derivative works of the Software, except as otherwise may be allowed herein; (4) transmit the Software over a network, by telephone, or electronically using any means, or permit use of the Software, in a network, multi-user arrangement or remote access arrangement except in the course of your network multiplayer play of the Software over authorized networks in accordance with its documentation; (5) engage in matchmaking for multi-player play over unauthorized networks; (6) design or distribute unauthorized levels; (7) reverse engineer the Software, derive source code, or otherwise attempt to reconstruct or discover any underlying source code, ideas, algorithms, file formats, programming or interoperability interfaces of the Software by any means whatsoever, except to the extent expressly permitted by law despite a contractual provision to the contrary, and then only after you have notified LucasArts in writing of your intended activities; (8) remove, disable, or circumvent any proprietary notices or labels contained on or within the Software; (9) export or re-export the Software or any copy or adaptation thereof in violation of any applicable laws or regulations; or (10) commercially exploit the Software, specifically at any cyber café, computer gaming center or any other public site without first obtaining a separate license from LucasArts (which it may or may not issue in its sole discretion) for such use, and LucasArts may charge a fee for any such separate license.

You may transfer the Software, but only if the recipient agrees to accept and be bound by the terms and conditions of this Agreement. If you transfer the Software, you must transfer all components and documentation. Your rights in and to this license are automatically terminated if and when you transfer the Software.

LucasArts warrants to the original consumer purchaser only that the media furnished in this Software will be free from defects in materials and workmanship under normal use for a period of ninety (90) days from the date of purchase (as evidenced by your receipt). If the media furnished in this Software proves to be defective, and provided that the original consumer purchaser returns the media to LucasArts in accordance with the instructions in this paragraph, LucasArts will replace the defective media: (a) free of charge to the original consumer purchaser, if the media proves to be defective within the ninety (90) day period following the date of purchase, or (b) for a fee of \$15.00 (all references herein are to United States dollars) per DVD if the media proves to be defective after the expiration of the ninety (90) day warranty period, provided that the request is made within a reasonable time from purchase, and LucasArts continues to distribute the DVD commercially. To obtain a replacement DVD please return the defective DVD only, postage prepaid, to LucasArts, P.O. Box 29908, San Francisco, CA 94129, accompanied by proof of date of purchase, a description of the defect, and your name and return address, as well as a check for \$15.00 per DVD made payable to LucasArts if after expiration of the warranty period. LucasArts will mail a replacement to you. In the event that the Software is no longer available, LucasArts retains the right to substitute a similar product of equal or greater value. This warranty is not applicable and shall be void if the defect has arisen through abuse, mistreatment, neglect, or from normal wear and tear. LucasArts has no obligation to provide support, maintenance, upgrades, modifications or new releases under this Agreement.

You expressly acknowledge and agree that use of the Software is at your sole risk. Except for the limited ninety (90) day warranty on the media set forth above, the Software and any related documentation or materials are provided "AS IS" and without warranty of any kind. LUCASARTS EXPRESSLY DISCLAIMS ALL WARRANTIES, EXPRESS AND IMPLIED, INCLUDING, BUT NOT LIMITED TO, THE IMPLIED WARRANTIES OF MERCHANTABILITY, FITNESS FOR A PARTICULAR PURPOSE AND NONINFRINGEMENT. LUCASARTS DOES NOT WARRANT THAT THE FUNCTIONS CONTAINED IN THE SOFTWARE WILL MEET YOUR REQUIREMENTS, THAT THE OPERATION OF THE SOFTWARE WILL BE UNINTERRUPTED OR ERROR-FREE, OR THAT DEFECTS IN THE SOFTWARE WILL BE CORRECTED.

LUCASARTS SHALL ALSO NOT BE LIABLE FOR ANY DELAYS, SYSTEM FAILURES OR SYSTEM OUTAGES WHICH MAY, AFFECT ONLINE GAME PLAY OR ACCESS THERETO. LUCASARTS RESERVES THE RIGHT TO DISCONTINUE MAKING THE SERVER AVAILABLE (AND YOUR ABILITY TO PLAY THE GAME) AT ANY TIME AND FOR ANY REASON. THE ENTIRE RISK AS TO THE RESULTS AND PERFORMANCE OF THE SOFTWARE IS ASSUMED BY YOU, AND YOU (AND NOT LUCASARTS) ASSUME THE ENTIRE COST OF ALL SERVICING, REPAIR AND/OR CORRECTION. SOME JURISDICTIONS DO NOT ALLOW THE EXCLUSION OF IMPLIED WARRANTIES, SO THE ABOVE EXCLUSION MAY NOT APPLY TO YOU.

UNDER NO CIRCUMSTANCES INCLUDING NEGLIGENCE, SHALL LUCASARTS, OR ITS DIRECTORS, OFFICERS, EMPLOYEES, LICENSORS, LICENSEES OR AGENTS, BE LIABLE TO YOU FOR ANY INCIDENTAL, INDIRECT, SPECIAL OR CONSEQUENTIAL DAMAGES (INCLUDING DAMAGES FOR LOSS OF BUSINESS PROFITS, BUSINESS INTERRUPTION, LOST DATA, LOSS OF BUSINESS INFORMATION, AND THE LIKE) ARISING OUT OF THE POSSESSION, USE, OR MALFUNCTION OF THIS PRODUCT, INCLUDING WITHOUT LIMITATION, DAMAGE TO PROPERTY AND, TO THE EXTENT PERMITTED BY LAW, DAMAGES FOR PERSONAL INJURY, EVEN IF LUCASARTS OR A LUCASARTS AUTHORIZED REPRESENTATIVE HAS BEEN ADVISED OF THE POSSIBILITY OF SUCH DAMAGES OR LOSS. SOME JURISDICTIONS DO NOT ALLOW THE LIMITATION OR EXCLUSION OF LIABILITY FOR INCIDENTAL OR CONSEQUENTIAL DAMAGES, SO THE ABOVE LIMITATION OR EXCLUSION MAY NOT APPLY TO YOU.

YOU AGREE THAT THE LIABILITY OF LUCASARTS ARISING OUT OF ANY KIND OF LEGAL CLAIM (WHETHER IN CONTRACT, TORT, OR OTHERWISE) WILL NOT EXCEED THE AMOUNT YOU ORIGINALLY PAID FOR THE USE OF THE SOFTWARE. YOU AGREE TO WAIVE ANY RIGHT TO EQUITABLE RELIEF, INCLUDING, WITHOUT LIMITATION, ANY INJUNCTIVE RELIEF, TO ENFORCE THE TERMS HEREOF. THE PARTIES ACKNOWLEDGE THAT THE LIMITATIONS OF LIABILITY IN THIS AND OTHER PROVISIONS OF THIS AGREEMENT AND THE ALLOCATION OF RISK HEREIN ARE AN ESSENTIAL ELEMENT OF THE BARGAIN BETWEEN THE PARTIES, WITHOUT WHICH LUCASARTS WOULD NOT HAVE ENTERED INTO THIS AGREEMENT. LUCASARTS' PRICING REFLECTS THIS ALLOCATION OF RISK AND THE LIMITATION OF LIABILITY SPECIFIED HEREIN.

THIS WARRANTY GIVES YOU SPECIFIC LEGAL RIGHTS, AND YOU MAY HAVE OTHER RIGHTS DEPENDING ON THE LAWS IN YOUR STATE.

This Agreement is governed in all respects by the laws of the State of California as such laws are applied to agreements entered into and to be performed entirely within California between California residents, and you hereby consent to personal jurisdiction in California. This Agreement will not be governed by the United Nations Convention on Contracts for the International Sale of Goods, the application of which is expressly excluded. You and LucasArts each agree that any claim or controversy arising out of this Agreement or the Software shall be settled by expedited binding arbitration in accordance with the rules of the American Arbitration Association. Such arbitration shall take place in Marin County, California, and you waive any claim that such forum is inconvenient. Any such claim or controversy shall be arbitrated solely on an individual basis and shall not be consolidated with a claim of any other party. The arbitrator may not change the terms of this Agreement. The arbitrator may award injunctive or other equitable relief to enforce the terms hereof; provided, however, that no injunctive or equitable relief may be awarded that would enjoin or impair LucasArts' rights or ability to distribute or otherwise market, advertise, promote or exploit the Software. If it is judicially determined that any claim or controversy arising out of or related to this Agreement or the Software cannot be settled by expedited binding arbitration as noted above, then you agree that any such claims or controversies shall be brought and maintained in the state courts located within the County of Marin, State of California or the federal courts of the Northern District of California, and you waive any claim that either such forum is inconvenient. The foregoing shall not preclude LucasArts from seeking any injunctive or other relief for protection of LucasArts' intellectual property rights or similar rights in any court of competent jurisdiction. Because LucasArts would be irreparably damaged if the terms of this Agreement were not specifically enforced, you agree that LucasArts shall be entitled, without bond, other security or proof of damages, to appropriate equitable remedies with respect to breaches of this Agreement, in addition to such other remedies as LucasArts may otherwise have under applicable laws. The prevailing party in any action to enforce this Agreement shall be entitled to recover costs and expenses including, without limitation, reasonable attorney's fees. LucasArts shall have the right, but not the obligation, to defend or settle, at its option, any action or proceeding arising from a claim that your permitted use of the Software infringes or misappropriates any patent, copyright, or other ownership of a third party. You agree to provide LucasArts with written notice of any such claim within ten (10) business days of your first knowledge thereof and to provide reasonable assistance in the defense of such claim. LucasArts shall have sole discretion and control over the defense or settlement of such claim, unless it declines to defend or settle such claim, in which case you are free to pursue such course of action as you reasonably determine. LucasArts is under no obligation hereunder to indemnify or hold you harmless with respect to any actions, proceedings or claims. In the event of such a claim, or if LucasArts believes such a claim is likely, LucasArts may: (i) procure for you the right to continue using the Software; (ii) modify the Software so that it becomes non-infringing; or, (iii) terminate this Agreement. You agree to comply with any court judgment or other conditions imposed on you or LucasArts as a result of an allegation of patent or copyright infringement (whether by court order, agreement or otherwise), whether or not such judgment or conditions contradict the conditions of this Agreement, including without limitation, ceasing use of the Software.

If any provision of this Agreement is held to be invalid or unenforceable, such provision shall be struck and the validity and enforceability of the remainder of this Agreement shall in no way be affected or impaired thereby and such provision shall be enforced to the maximum extent possible so as to effect the intent of the parties and shall be reformed without further action by the parties to

the extent necessary to make such provision valid and enforceable. LucasArts' failure to act with respect to a breach by you or others does not waive LucasArts' right to act with respect to subsequent or similar breaches, nor will any single or partial exercise of any right hereunder preclude further exercise of any other right hereunder. This Agreement sets forth the entire understanding and agreement between you and LucasArts with respect to the subject matter hereof. Except as provided herein, this Agreement may not be amended except in a writing signed by both parties; provided, however, that LucasArts has the right, without notice and/or without a writing signed by both parties, to amend this Agreement in connection with any modifications or updates to the Software.

The license term shall commence as of the date you install or otherwise use the Software. You may terminate this license by disposing of the Software. Without prejudice to any other rights of LucasArts, this Agreement will terminate automatically if you fail to comply with its terms and conditions. In such event, you must destroy all copies of the Software and all its component parts. Your disposal or destruction of the Software and any component parts must be done in accordance with applicable law. Except for the license granted herein and as expressly provided herein, the terms of this Agreement will survive termination.

If the Software is acquired under agreement with the U.S. government or any agency or instrumentality thereof, it is acquired as "commercial computer software" subject to the provisions hereof, as specified in 48 CFR 12.212 of the FAR and, if acquired for Department of Defense (DoD) units, 48 CFR 227-2702 of the DoD FAR Supplement, or sections succeeding thereto.

LucasArts and the LucasArts logo are trademarks of Lucasfilm Ltd., in the United States and/or other countries. © 2006, 2007 Lucasfilm Entertainment Company Ltd. and Frontier Developments Ltd. All rights reserved.

This game and manual are each a work of fiction. All of the characters, events, locations, logos, and entities portrayed in this game are fictional. Any resemblance to real persons, living or dead, or actual events, is purely coincidental.

Online play subject to online terms of use and privacy policy as may be available online at www.lucasarts.com.

LucasArts, a division of
Lucasfilm Entertainment Company Ltd.
P.O. Box 29908
San Francisco, CA 94129

4067602

LucasArts and the LucasArts logo are registered trademarks of Lucasfilm Ltd.

© 2006, 2007 Lucasfilm Entertainment Company Ltd. and Frontier Developments Ltd. & © or TM as indicated. All rights reserved.